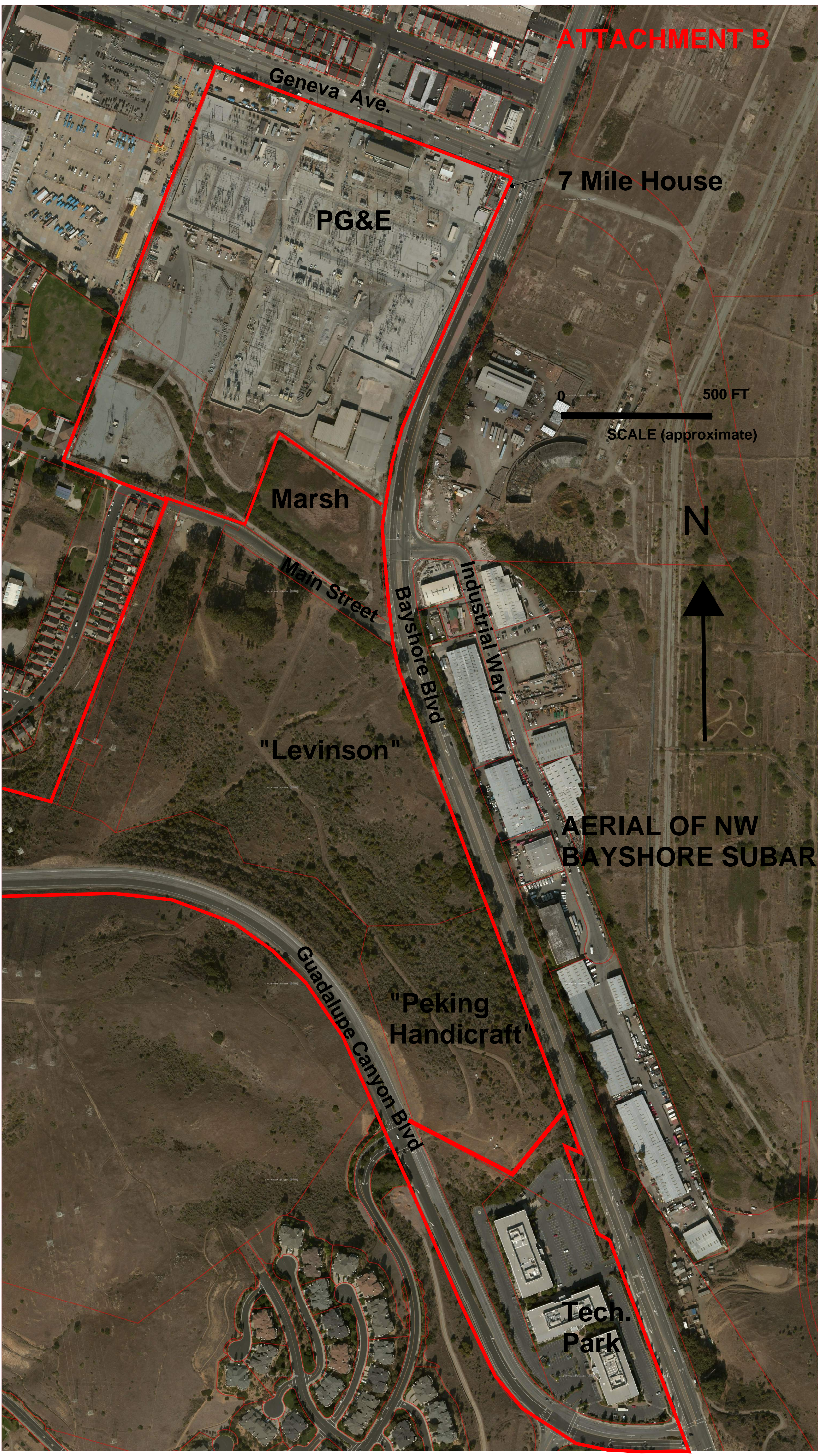


ATTACHMENT A

**Table
Summary of M-1 Zoning and Related Amendments**

General Plan Subarea/Designation	Zoning Designations	Key Properties	Status/Comments
Southeast Bayshore/ Trade Commercial	M-1 Manufacturing	Prologis Site (tenant: The RealReal)	Planning Commission recommended zoning amendments to City Council.
Southwest Bayshore/ Open Space	M-1 Manufacturing	City Public Right-of-Way	Anticipated introduction of Ordinance in late April.
Northeast Bayshore/ Trade Commercial	M-1 Manufacturing	Industrial Way warehouse sites	Part of the on-going Baylands EIR planning process.
Northwest Bayshore/ Planned Development Subregional Commercial/Retail/Office	M-1 Manufacturing	PG&E substation, 7 Mile House/V&A Auto	Tonight's topics – potential General Plan and Zoning Amendments, pending Planning Commission recommendation and Council approval.
	PD Planned Development	Technology Park, and the vacant “Levinson” and “Peking Handicraft” sites	
Northwest Bayshore/ Marsh	MLB Marsh	Marsh	No changes recommended



Geneva Ave.

7 Mile House

PG&E

0 500 FT
SCALE (approximate)

Marsh

N

Main Street

Bayshore Blvd
Industrial Way

"Levinson"

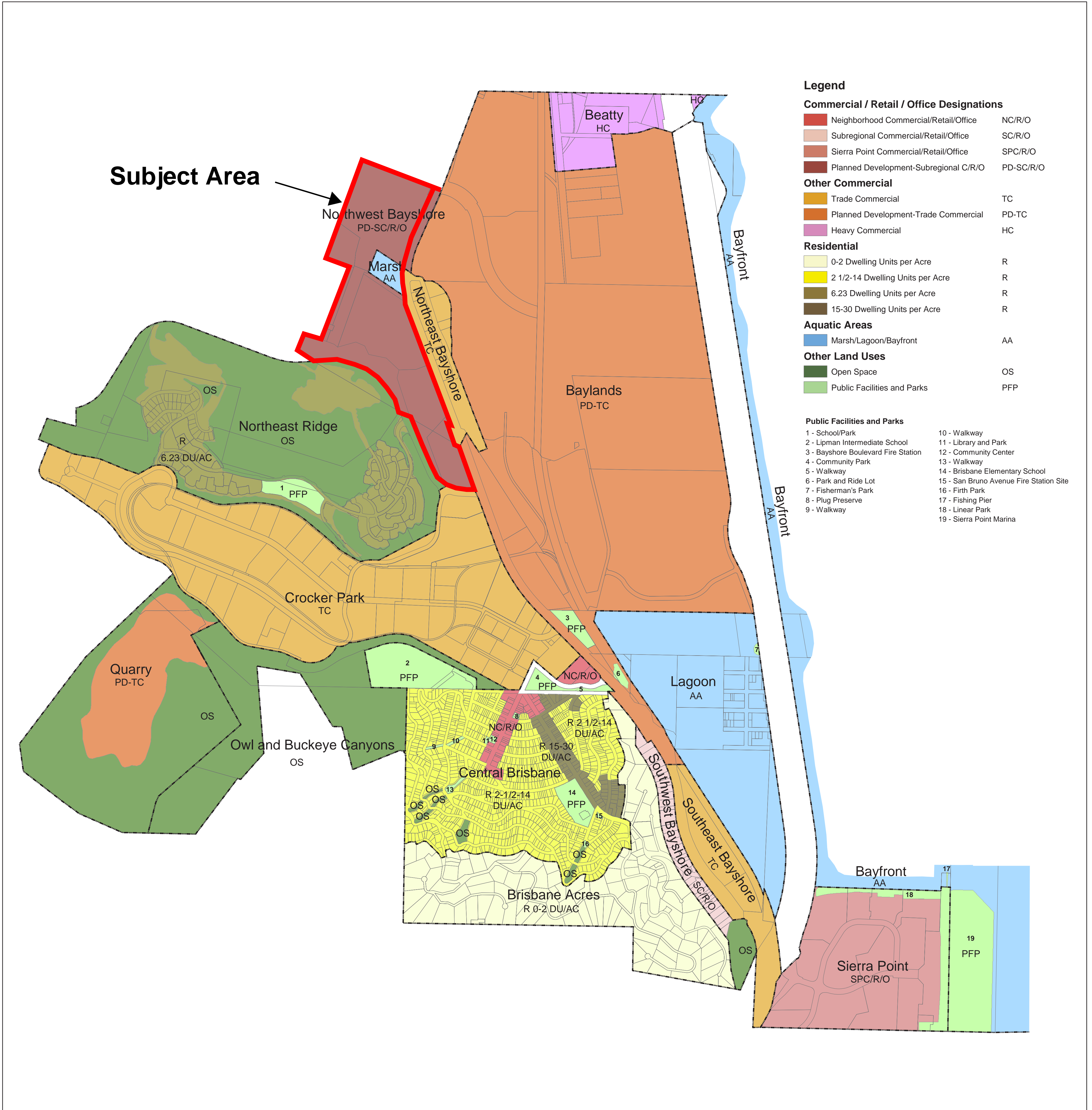
**AERIAL OF NW
BAYSHORE SUBAREA**

Guadalupe Canyon Blvd

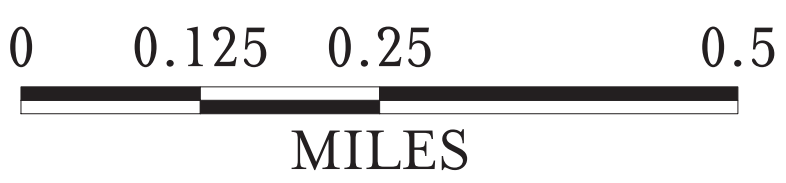
"Peking
Handicraft"

Tech.
Park

1994 General Plan Land Use Diagram City of Brisbane

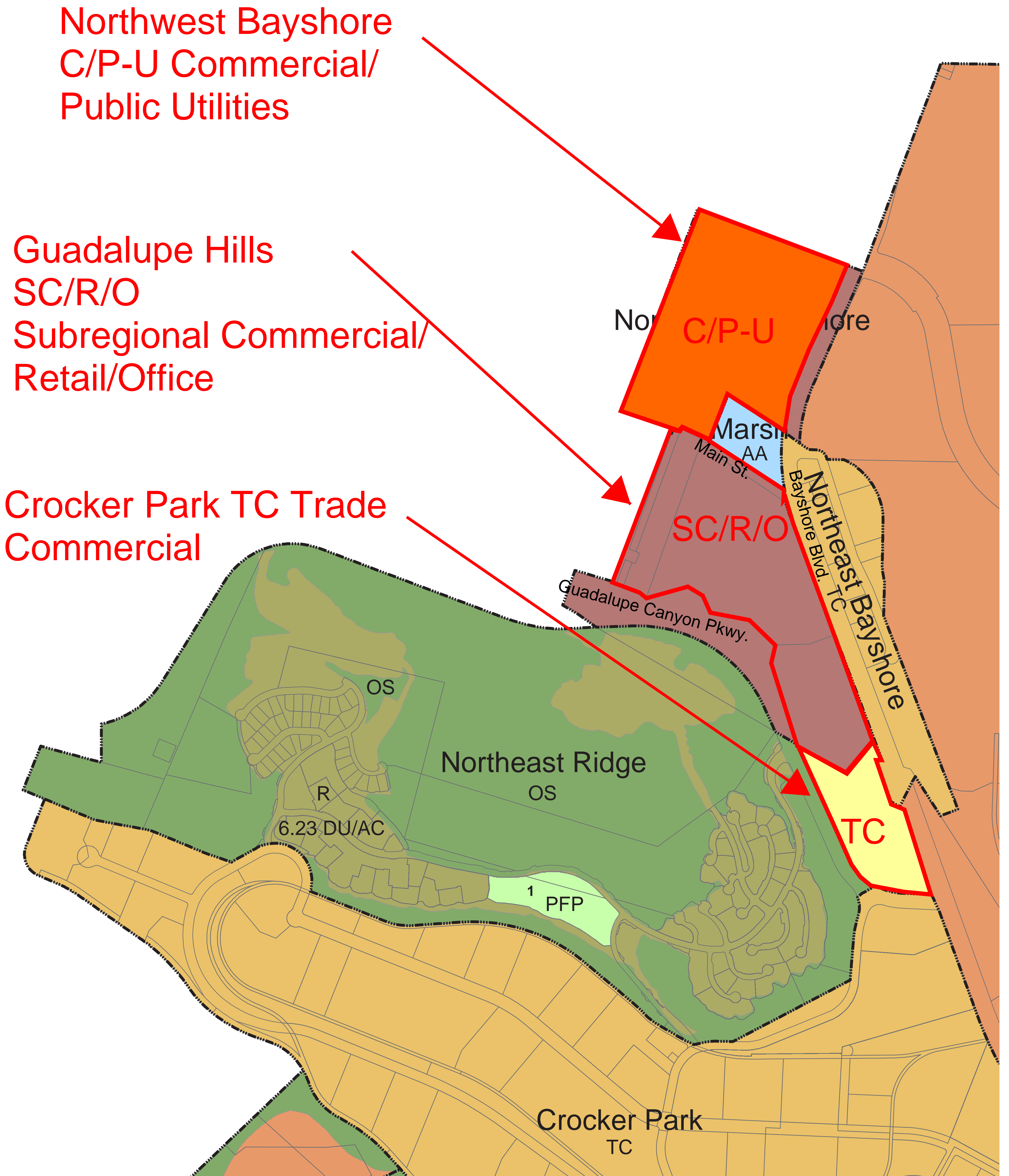


L S A

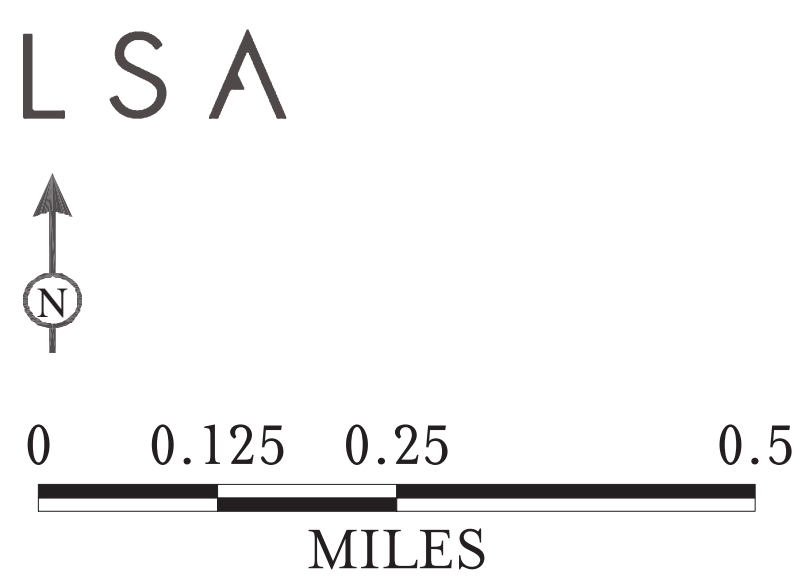
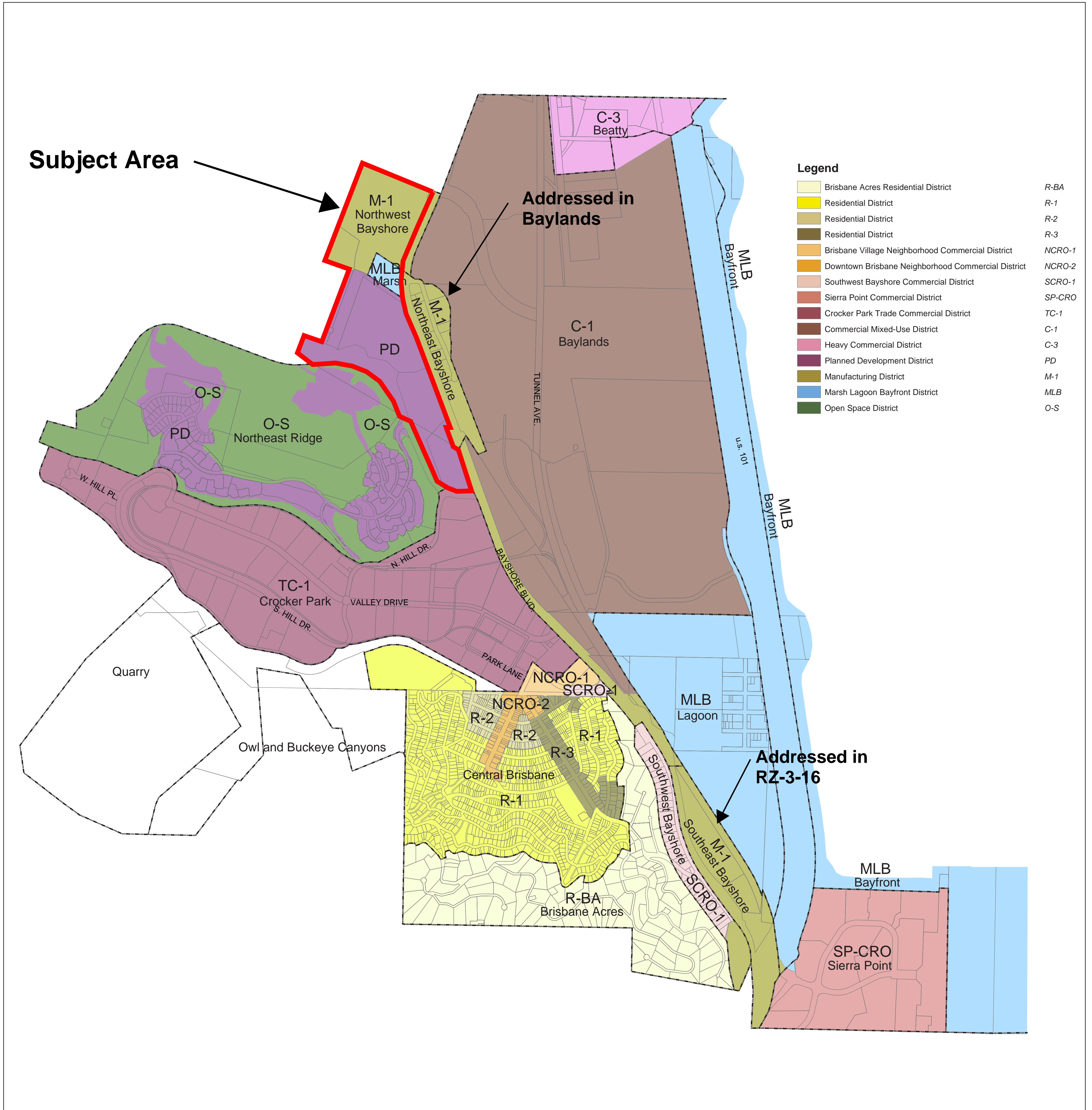


1994 General Plan Land Use Diagram

City of Brisbane



Zoning Map City of Brisbane



Revised: May 16, 1988
 Revised: May 29, 1992
 Revised: April 1996
 Revised: February 2000
 Revised: February 2002
 Revised: July 2003



Zoning Map

City of Brisbane

Rezone to:
C/P-U
Commercial/
Public Utilities

Rezone to:
SCRO-2
Guadalupe Hills
Commercial

Rezone to:
TC-1
Crocker Park
Trade
Commercial

