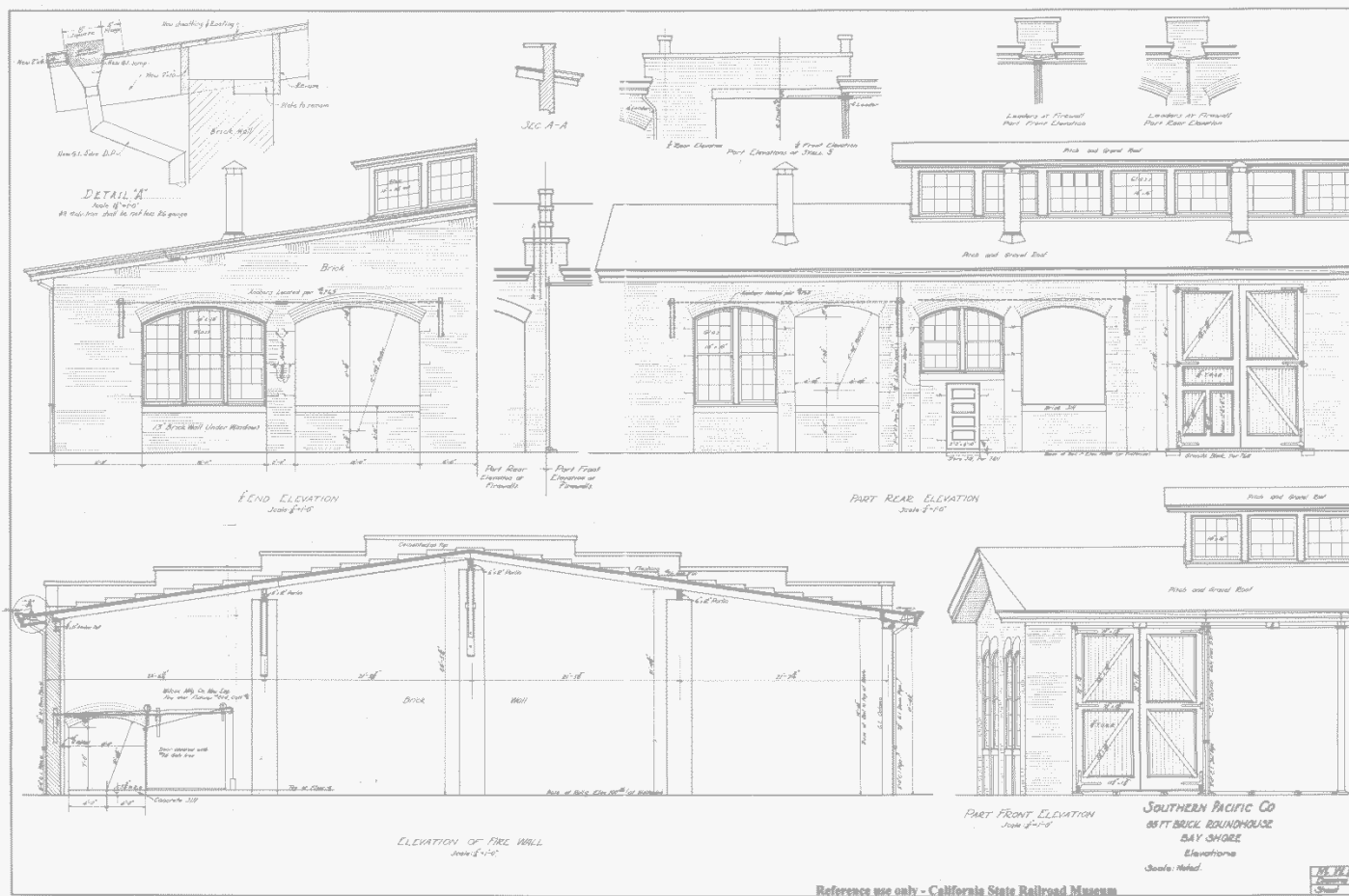


Bayshore Roundhouse



California Roundhouses



- Brisbane Roundhouse – The **last** remaining brick mainline roundhouse in the state of California
- One of a **few** brick mainline roundhouses west of the Mississippi.
- The **last** standing Southern Pacific Railroad roundhouse
- The difference with other California roundhouses
 - State Belt RR / S.F. was converted to offices
 - Sierra RR / Jamestown – Wooden – Still in use
 - CSRM / Sacramento – new building - replica
 - Samoa, CA Roundhouse- in use by Timber Heritage Assn.

Proud Workers



Courtesy Michael Mangini Collection

Sanfranciscotrains.org

...and more workers...



And Proud Bosses



Photo Courtesy Michael Mangini Collection

Sanfranciscotrains.org



Diverse Workers



Courtesy Michael Mangini Collection

Sanfranciscotrains.org

Smart Workers



Copyright RC Brown Collection. Courtesy W. Vielbaum

Sanfranciscotrains.org

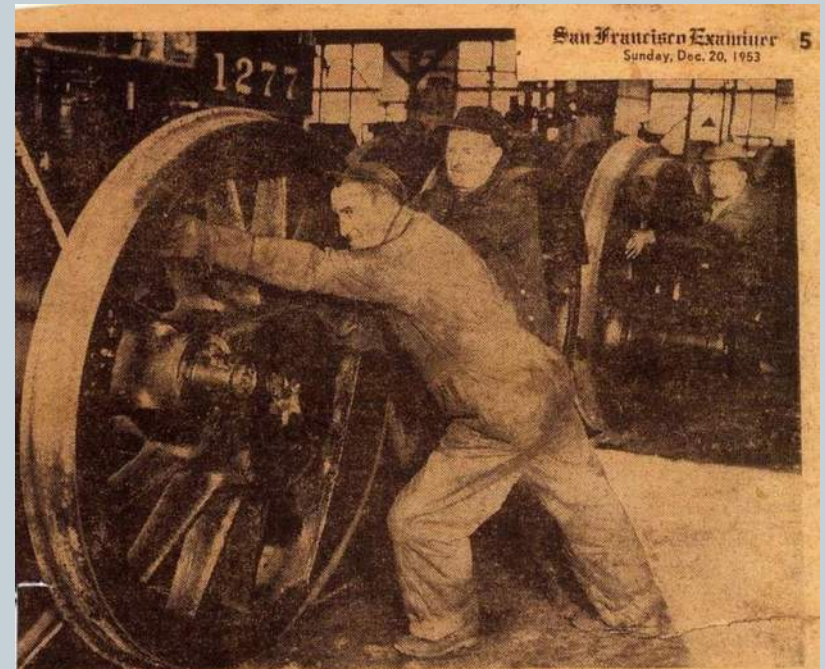
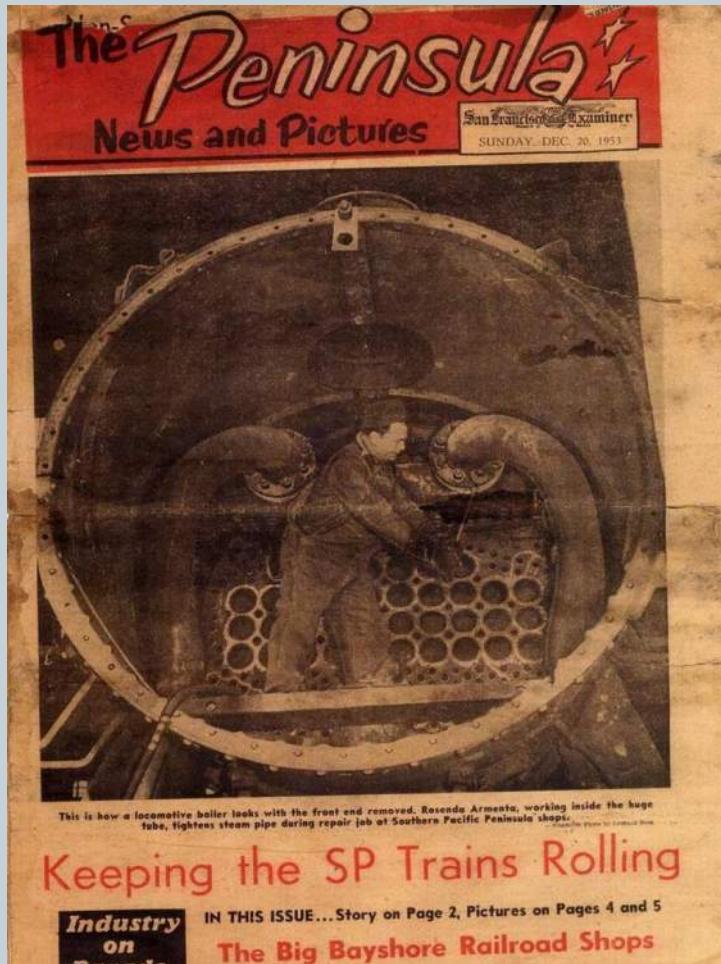
Engine 966 Repurposed by Bayshore Employees



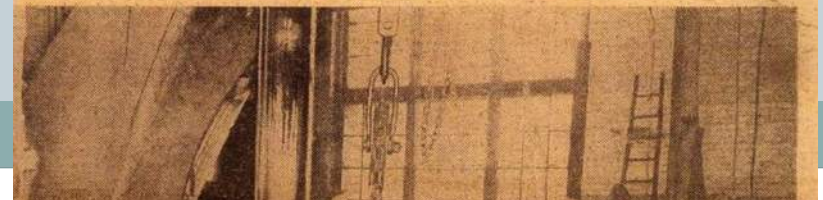
Copyright RC Brown Collection. Courtesy W. Vielbaum

Sanfranciscotrains.org

Boilers and Drive Wheels 1953



It takes strength as well as know-how to handle the huge drive wheels of engine No. 1277, in the shop for overhaul. From front to rear: Timothy McGillicuddy, Neil Anderson, Tony Bernardi.



Diesel era



1979



Begging To Be Valued Since Decommissioned- 1983



Difficult, Not Impossible



Thank You



- Cris Hart cris.hart@comcast.net
- San Francisco Trains, Inc Federal Tax ID 20-5166823 State of CA domestic non-profit corporation C2854663 223 Mariposa Street, Brisbane, CA 94005
- All photographs courtesy of collectors and California State Railroad Museum